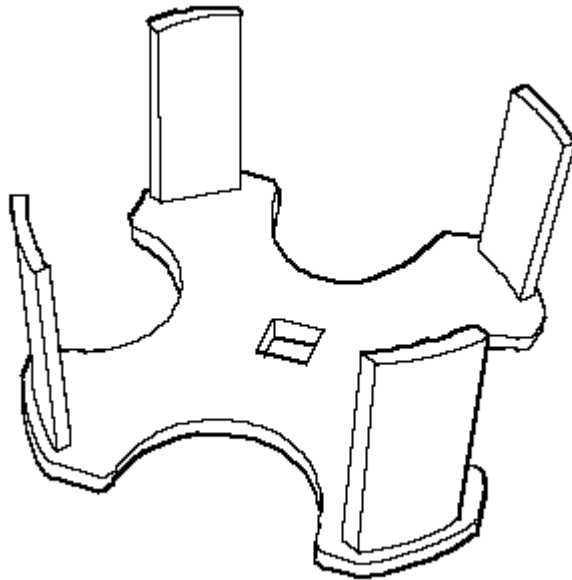


Fuel Pump/Fuel Gauge Sending Unit Replacement

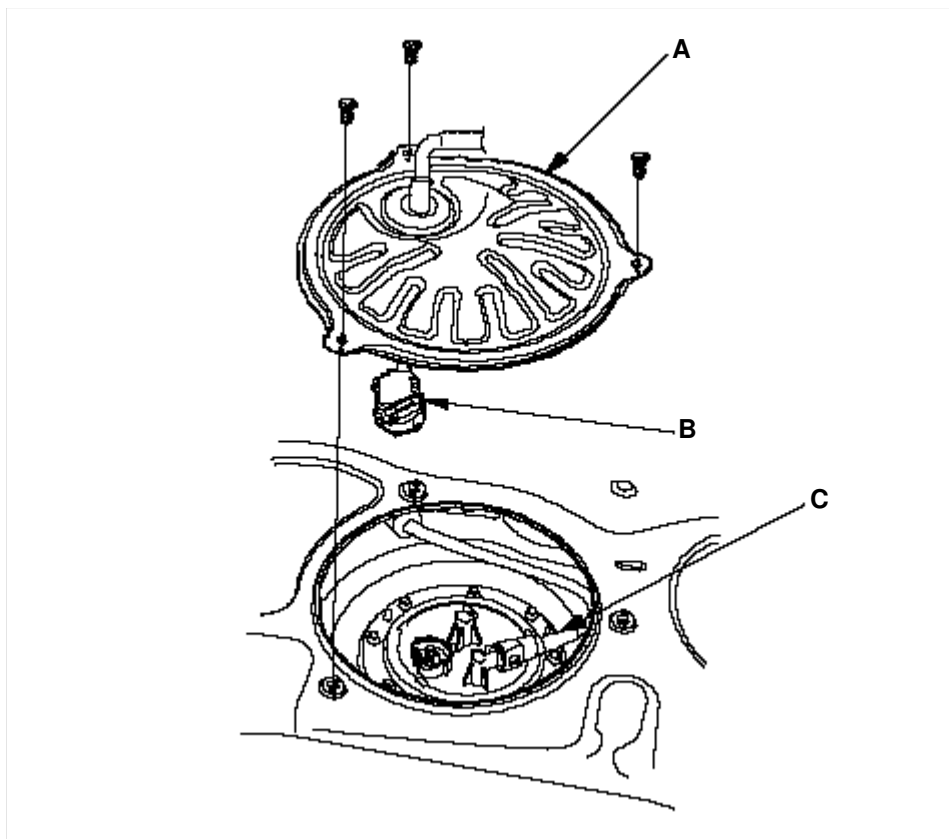
Special Tools Required

Fuel sender wrench (07XAA-001010A)

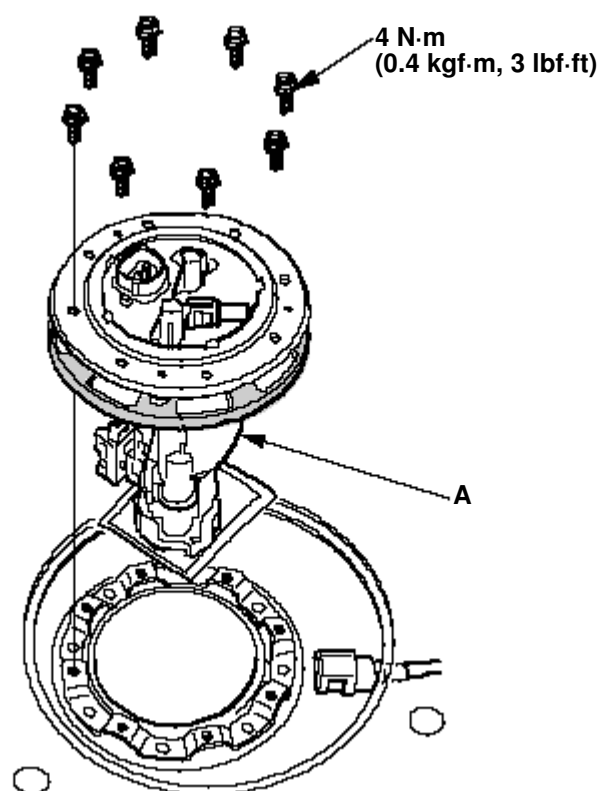


Except ECONO model:

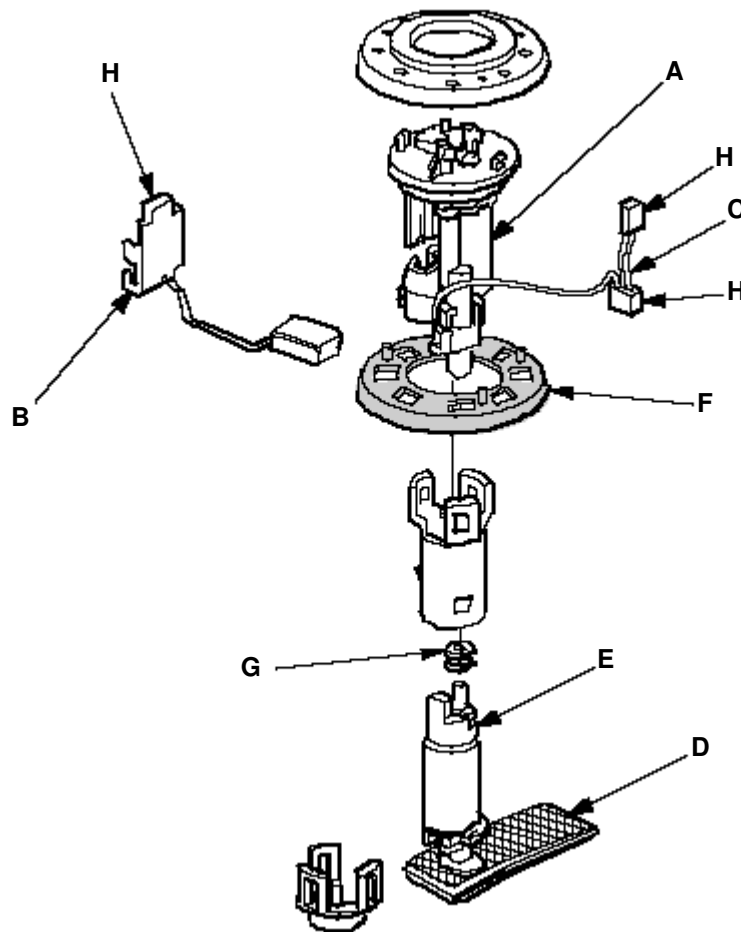
1. [Relieve the fuel pressure.](#)
2. Remove the fuel fill cap.
3. Remove the trunk floor.
4. Remove the access panel (A) from the floor.



5. Disconnect the fuel pump 5P connector (B).
6. Disconnect the quick-connect fitting (C) from the fuel tank unit.
7. Remove the fuel tank unit (A).



8. Remove the fuel filter (A), the fuel gauge sending unit (B), and the wire harness (C).



9. When connecting the fuel tank unit, make sure the connection is secure and the suction filter (D) is firmly connected to the fuel pump (E).

10. Install the part in the reverse order of removal with a new base gasket (F), then check these items:

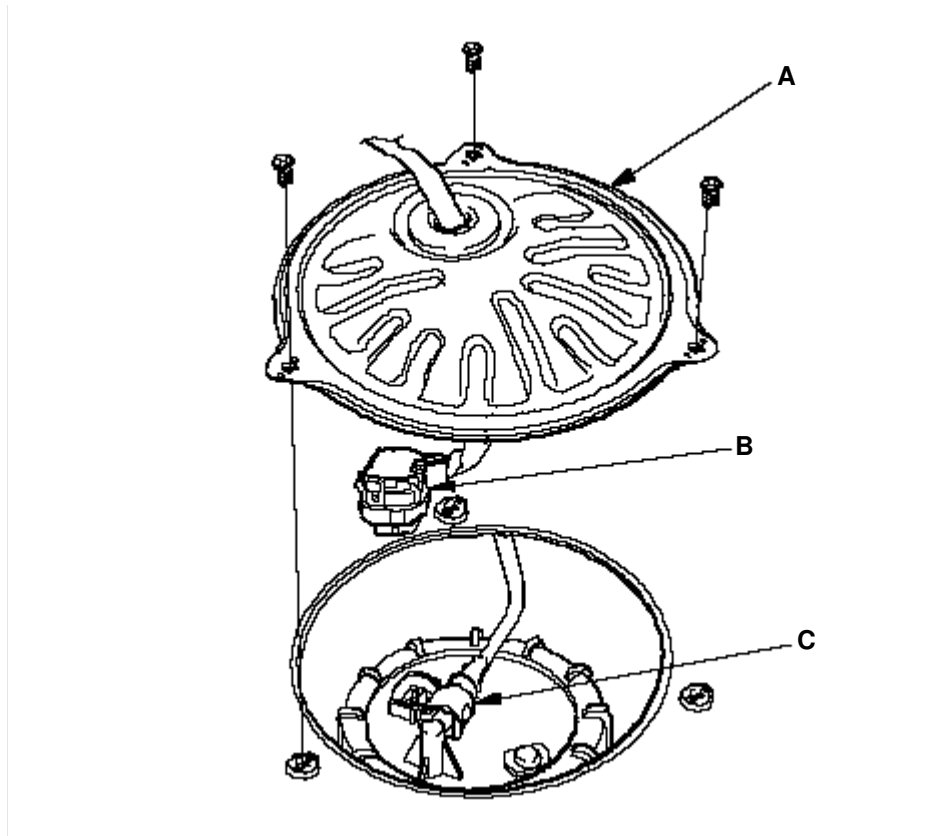
- When connecting the wire harness, make sure the connection is secure and the connector (H) is firmly locked into place.
- When installing the fuel gauge sending unit, make sure the connection is secure and the connector is firmly locked into place. Be careful not to bend or twist it excessively.
- When installing the grommet (G), coat the grommet with clean engine oil.

ECONO model:

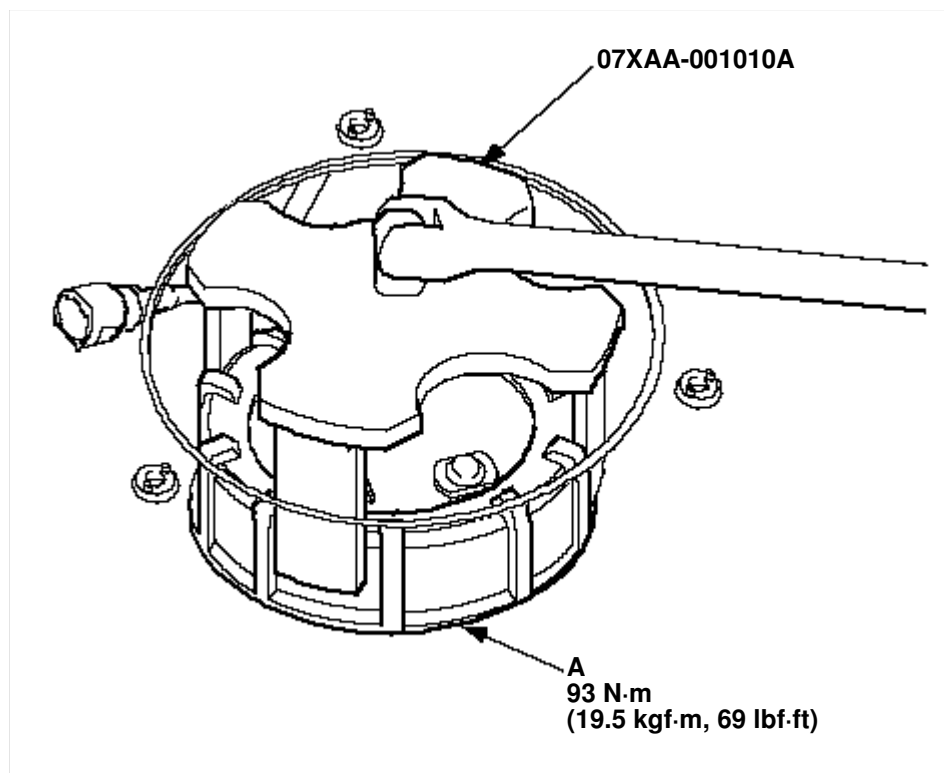
1. [Relieve the fuel pressure.](#)

2. Remove the fuel fill cap.

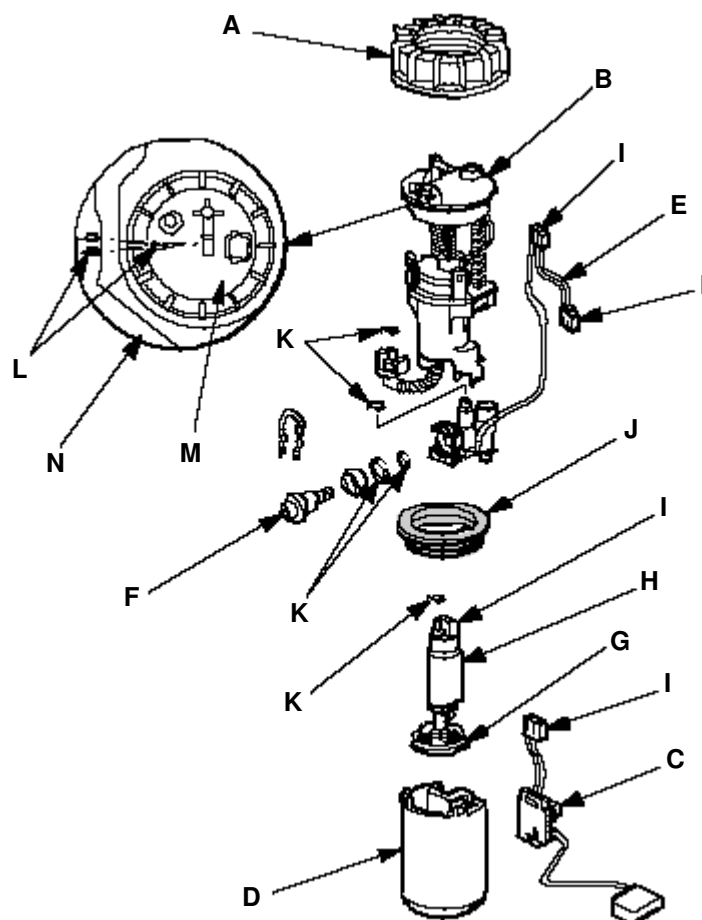
3. Remove the trunk floor.
4. Remove the access panel (A) from the floor.



5. Disconnect the fuel pump 5P connector (B).
6. Disconnect the quick-connect fitting (C) from the fuel tank unit.
7. Using the special tool, loosen the fuel pump/sender assembly locknut (A).



8. Remove the locknut (A) and the fuel pump/sender assembly.



9. Remove the fuel filter (B), the fuel gauge sending unit (C), the case (D), the wire harness (E), and the fuel pressure regulator (F).
10. When connecting the fuel pump assembly, make sure the connection is secure and the suction filter (G) is firmly connected to the fuel pump (H).
11. Check these items before installing the fuel tank unit:
 - When connecting the wire harness, make sure the connection is secure and the connector (I) is firmly locked into place.
 - When installing the fuel gauge sending unit, make sure the connection is secure and the connector is firmly locked into place. Be careful not to bend or twist it excessively.
12. Install the parts in the reverse order of removal with a new base gasket (J) and new o-rings (K). When installing the fuel tank unit, align the marks (L) on the unit (M) and the fuel tank (N).